

General:

Window replacement for Flat 4, 67 Enys Road, BN21 2DN, Eastbourne, East Sussex.

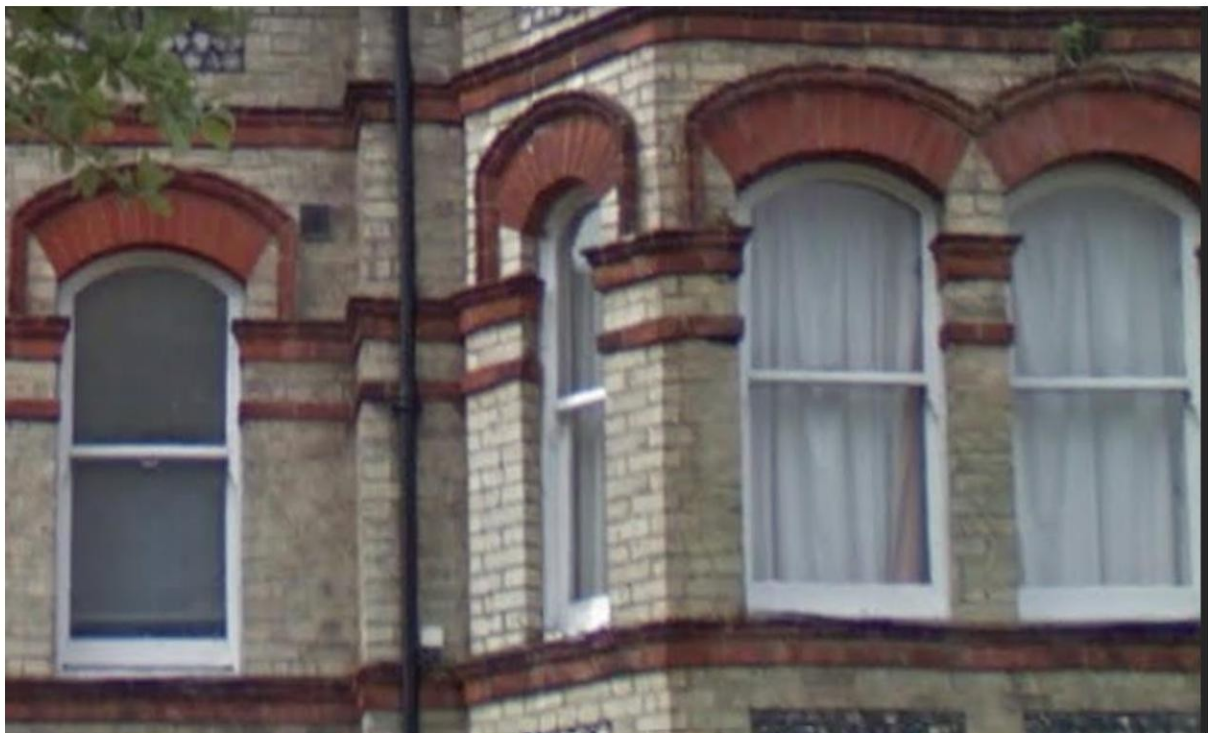
The measurements of the original windows are retained in the replacement and the style of the incorporating archers are preserved in the replacements.

Model isn't a scaled model, but shows the exact measurements and look of the new windows to be fitted as replacement.

The Models with measurements are shown how the windows will appear from the inside perspective of the flat with the top curves being kept identical to current windows. This is to accommodate for preserving the exact look of the windows from the outside perspective keeping them identical to the current ones simply just replacing the wooden windows with PVC versions.

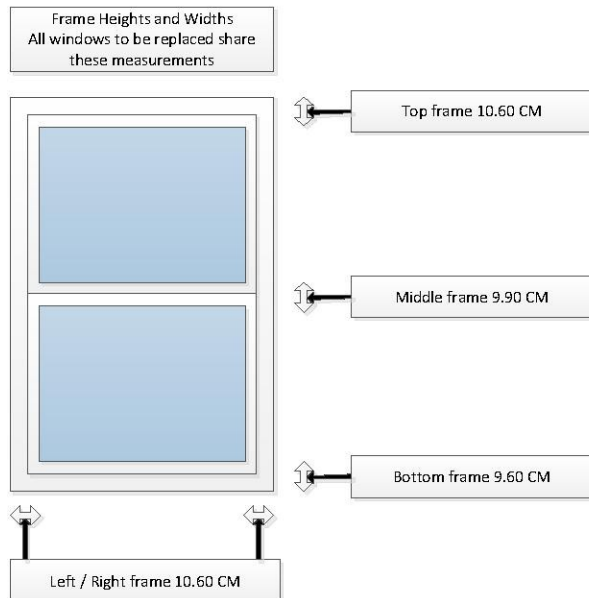
Outside pictures of current windows.

Replacements will be kept identical as existing just replacing wood for PVC versions and incorporating identically into the existing brickwork.

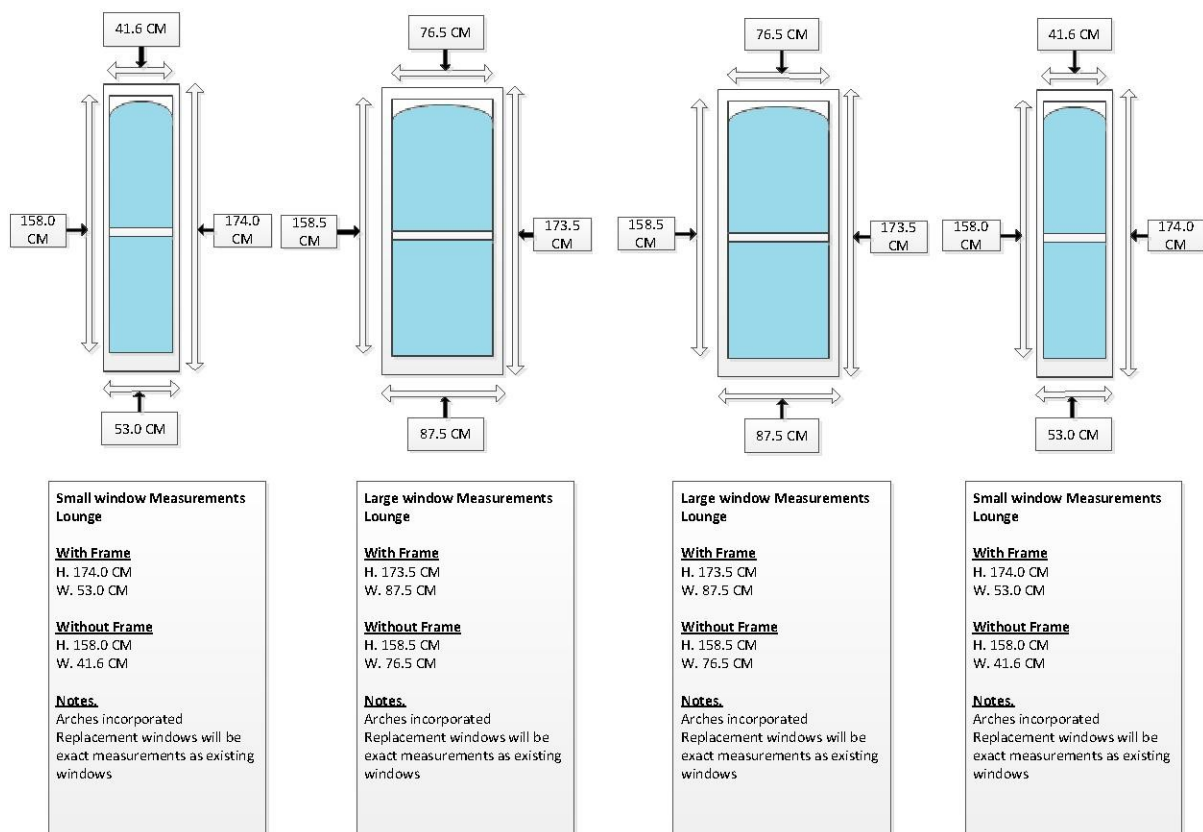


Framework:

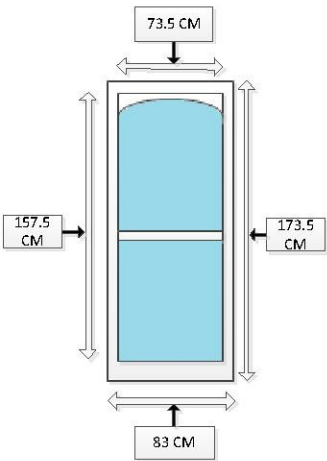
Framework width and height will be kept identical through all the window replacements and are listed below. Only the height and width of the individual windows varies depending on the individual replacements.



Lounge: 4 Windows total – 2 Small and 2 Large



Bathroom: 1 Window total – 1 large



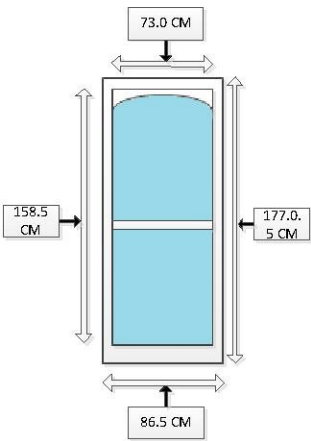
Window Measurements Bathroom

With Frame
H. 173.5 CM
W. 83.0 CM

Without Frame
H. 157.5 CM
W. 73.5 CM

Notes.
Arches incorporated
Replacement windows will be exact measurements as existing windows

Kitchen: 2 Windows Total – 2 Large

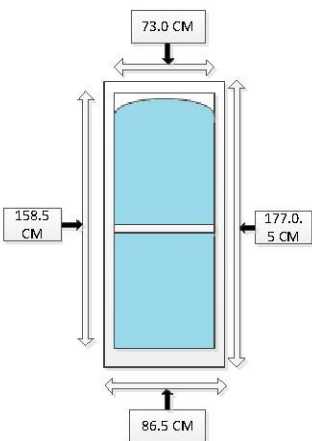


Window Measurements Kitchen

With Frame
H. 177.0 CM
W. 86.5 CM

Without Frame
H. 158.5 CM
W. 73.0 CM

Notes.
Arches incorporated
Replacement windows will be exact measurements as existing windows



Window Measurements Kitchen

With Frame
H. 177.0 CM
W. 86.5 CM

Without Frame
H. 158.5 CM
W. 73.0 CM

Notes.
Arches incorporated
Replacement windows will be exact measurements as existing windows